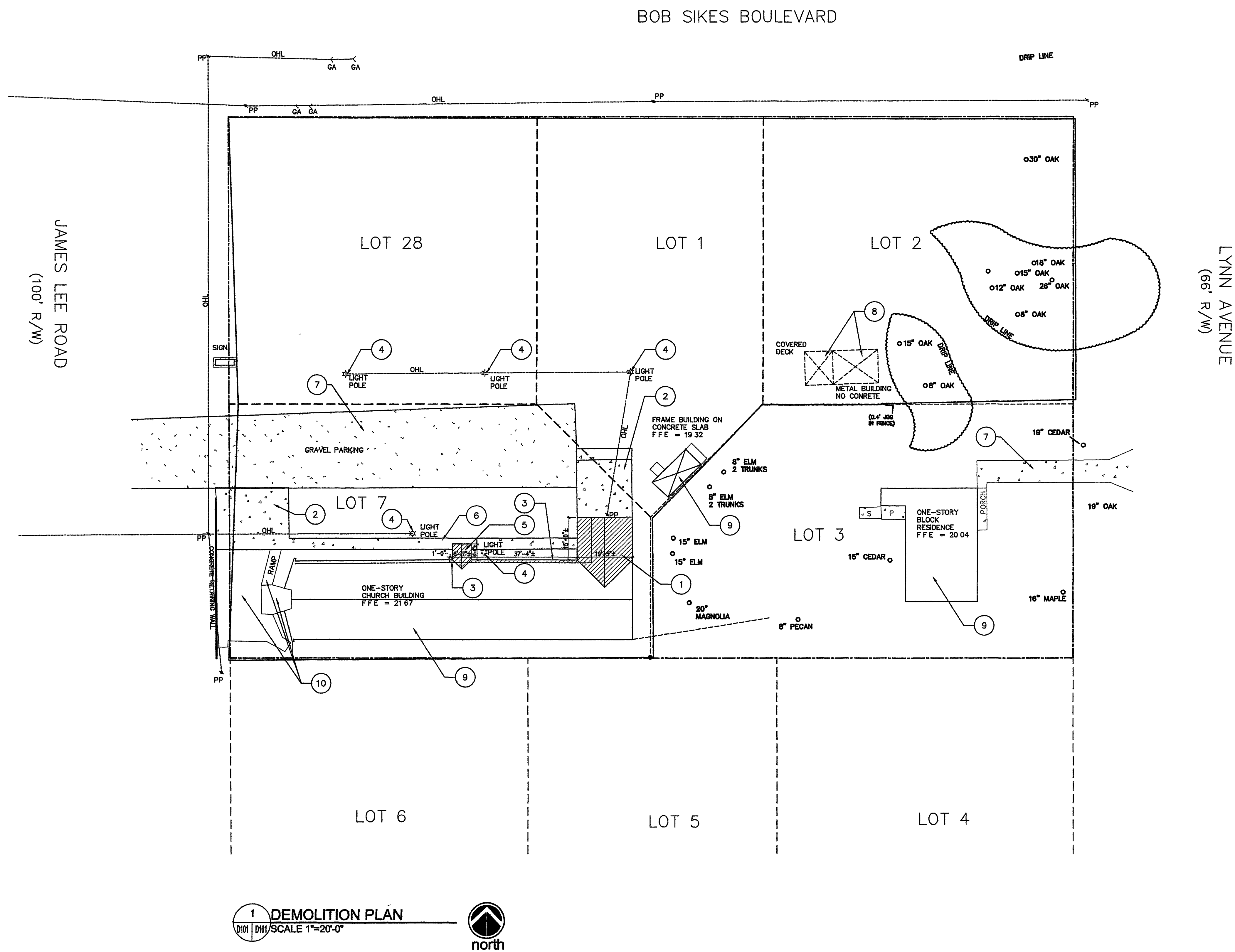


PROPRIETARY RIGHTS CLAUSE: INFORMATION AND DATA CONTAINED ON THIS DRAWING IS CONFIDENTIAL AND SHALL NOT BE USED WITHOUT PRIOR WRITTEN PERMISSION BY ANY ENTITY NOT HAVING A CONTRACTUAL RELATIONSHIP WITH THE ARCHITECT. THIS LEGEND SHALL BE MARKED ON ANY REPRODUCTIONS HEREOF IN WHOLE OR IN PART. KENDRICK-DAVID DOWLING ARCHITECTS, INC. © COPYRIGHT 2007.



- DEMOLITION NOTES:**
- 1 REMOVE EXISTING PORTION OF BUILDING, INCLUDING BUT NOT LIMITED TO WALLS, ROOF, COLUMN, CONCRETE STEPS, HANDRAIL, DOORS, WINDOWS, LIGHTING, ETC
 - 2 REMOVE EXISTING CONCRETE SLAB
 - 3 REMOVE EXISTING OVERHANG, FLUSH WITH EXISTING WALL
 - 4 REMOVE EXISTING LIGHT POLE AND OVERHEAD LINES
 - 5 REMOVE EXISTING PORCH ELEMENTS, INCLUDING BUT NOT LIMITED TO ROOFING, BRACING, CONCRETE STEPS, DOOR, LIGHTING ETC
 - 6 REMOVE EXISTING CONCRETE WALK
 - 7 REMOVE EXISTING GRAVEL DRIVE AND PARKING AREA
 - 8 REMOVE EXISTING METAL BUILDING AND DECK
 - 9 EXISTING BUILDING TO REMAIN
 - 10 EXISTING CONCRETE WALK AREA, CONCRETE RAMP, LANDING AND METAL HANDRAILS TO REMAIN